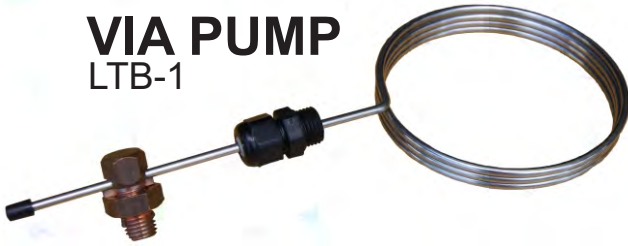


POOL WATER BOND

VIA PUMP

LTB-1



- ◆ Connects to Pool Pump's bonding wire.
- ◆ Installs in pump strainer pot via the drain plug port.
- ◆ Stainless steel construction.
- ◆ Meets requirements of NEC 680 (C).
- ◆ Patent Pending by CMP.

SACRIFICIAL ZINC ANODE

ZAD-1

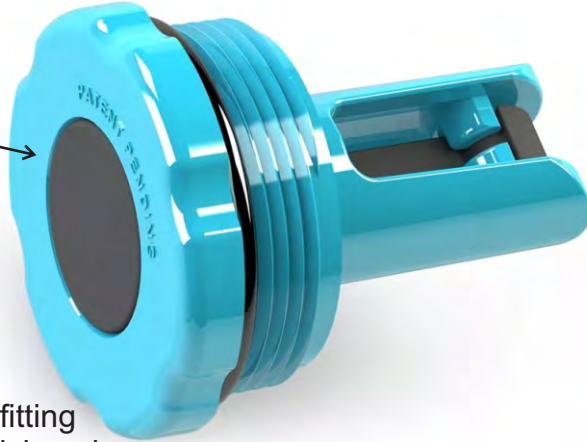


- ◆ Attaches to any skimmer basket.
- ◆ Doubles as a "hold down" weight.
- ◆ Fights Galvanic Corrosion and surface staining.

BUNGEE-PLUG

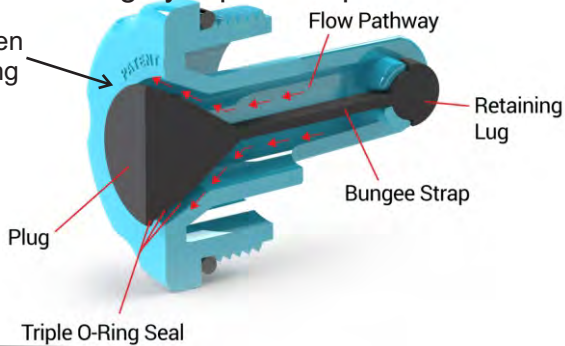
BGP-1

Fitting closed and sealed



- ◆ Multi purpose fitting
- ◆ Reliable winterizing plug
- ◆ Return line check valve
- ◆ Durable construction
- ◆ Built-in "Triple O-Ring Seal"
- ◆ Patents Pending by Aqua Group Inc.

Fitting open and flowing



INLINE SACRIFICIAL ANODE & WATER BOND

ZBI-1



- ◆ Protects the pool from Galvanic Corrosion.
- ◆ Replaceable zinc anode lasts approximately 3 years.
- ◆ Patent Pending by CMP.

LIGHT REPAIR TOOL (clamp)

LRT-1



- ◆ Holds light assembly together while ONE MAN easily installs the clamp.
- ◆ Works with any pool or spa lights.
- ◆ Even works with Sunglow & Sealed Beam
- ◆ Folds for storage

